

STRIP LED LIGHT

CS 120 STRIP LED LIGHT

HI-TECH WATERPROOF
INVISIBLE NANO COATING
NON FLAMMABLE AND NOT TOXIC
PRODUCT CERTIFICATION

The CS 120 STRIP LED LIGHTS are suggested to obtain a multidirectional linear lighting thanks to their high lumen output. They are suitable for many light applications (walls, big ceilings, compartments, stores and workshops). Their sealed version are also suggested for WATERPROOF applications such loggias, urban paths, walkways, bridges and to enhance facade's details as string courses. Thanks to the REGU profile it is possible to choose three different types of beam using its specific lens: 30°/60°/90°.

BEAM APLITUDE REGULATION

Thanks to the "REGU" profile you are able to choose three different type of beam using its specific lens: 30° / 60° / 90°

DIMENSIONS:

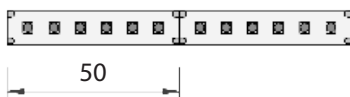
Coil Length: 5 mt. / 196.85 in.

Coil Width: 8 mt. / 0.31 in.

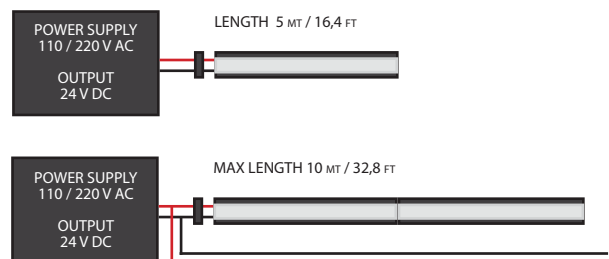
Min cut length: 50 mm / 1.96

NET WEIGHT:

0.070 Kg. / 0.15 Lbs.



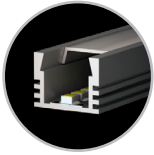
ELECTRICAL DIAGRAM:



Model Specifics:

Model Code:		Lumen 1mT:	Watt 1mT:	CRI:
83PIXEL12024WP2700	(2700 Kelvin)	600	9.6	>80
83PIXEL12024WP3000	(3000 Kelvin)	600	9.6	>80
83PIXEL12024WP4000	(4000 Kelvin)	600	9.6	>80

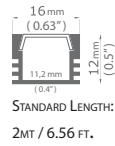




PDSA

MODEL CODE : 85PDSA2000AAN

Suitable for flash lighting and/or indirect lighting.
Note: The Opal cover is suggested when the luminous side is visible. IP40.



COVERS:

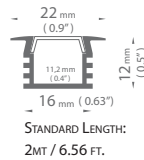
TRANSPARENT CODE : 85PDSA2000PC
OPAL CODE : 85PDSA2000PCO
NET WEIGHT: 0.240 Kg. / 0.53 Lbs.



PDS4

MODEL CODE : 85PDS42000AAN

Suitable for recessed lighting or inside furniture.
Note: The Opal cover is suggested when the luminous side is visible. IP40.



COVERS:

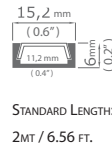
TRANSPARENT CODE : 85PDSA2000PC
OPAL CODE : 85PDSA2000PCO
NET WEIGHT: 0.240 Kg. / 0.53 Lbs.



MICA

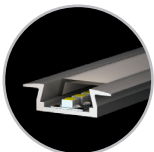
MODEL CODE : 85MICA2000AAN

Suitable for flash lighting and/or indirect lighting.
Note: The Opal cover is suggested when the luminous side is visible. IP40.



COVERS:

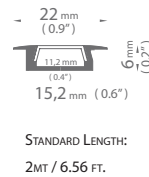
TRANSPARENT CODE : 85PDSA2000PC
OPAL CODE : 85PDSA2000PCO
NET WEIGHT: 0.240 Kg. / 0.53 Lbs.



MICK

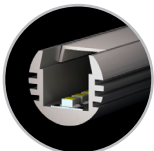
MODEL CODE : 85MICK2000AAN

Suitable for recessed lighting or inside furniture.
Note: The Opal cover is suggested when the luminous side is visible. IP40.



COVERS:

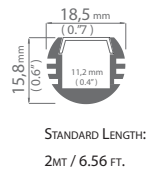
TRANSPARENT CODE : 85PDSA2000PC
OPAL CODE : 85PDSA2000PCO
NET WEIGHT: 0.240 Kg. / 0.53 Lbs.



PDSO

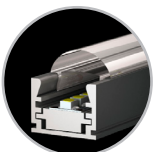
MODEL CODE : 85PDSO2000AAN

Suitable for adjusting the lighting flux with 10° beam.
Note: The Opal cover is suggested when the luminous side is visible. IP40.



COVERS:

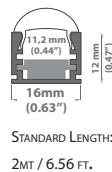
TRANSPARENT CODE : 85PDSA2000PC
OPAL CODE : 85PDSA2000PCO
NET WEIGHT: 0.240 Kg. / 0.53 Lbs.



REGU

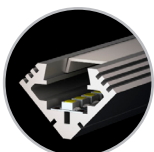
MODEL CODE : 85REGU2000AAN

Suitable for regulating the lighting flux at 30°/60°/90°.
Note: The Opal cover is suggested when the luminous side is visible. IP40. Optics: 30°/60°/90°



COVERS:

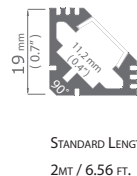
TRANSPARENT CODE : 85REGU2000PC
NET WEIGHT: 0.240 Kg. / 0.53 Lbs.



45AL

MODEL CODE : 8545AL2000AAN

Suitable for indirect lighting on corner surfaces.
Note: The Opal cover is suggested when the luminous side is visible. IP40.



COVERS:

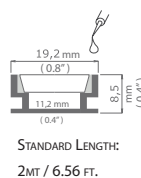
TRANSPARENT CODE : 85PDSA2000PC
OPAL CODE : 85PDSA2000PCO
NET WEIGHT: 0.240 Kg. / 0.53 Lbs.



HRAL

MODEL CODE : 85HRAL2000AAN

Suitable for floor on drive-over lighting.
Note: The Opal cover is suggested when the luminous side is visible. IP40.



COVERS:

OPAL CODE : 85HRAL2000PCO
NET WEIGHT: 0.240 Kg. / 0.53 Lbs.